

Soo ja tema kured  
soolo klaverile

Hanna-Ingrid Nurin  
2021

Tranquillo

Handwritten musical notation for the first system. The treble clef staff contains a melodic line starting with a half note G4 (marked *mf*), followed by a wavy line. The second measure begins with a half note G4 (marked *mf*), followed by a wavy line. The bass clef staff contains a whole rest in the first measure and a whole note G2 in the second measure. Dynamic markings include *mf* and *p*.

Handwritten musical notation for the second system. The treble clef staff features a sixteenth-note run in the first measure, followed by a wavy line. The second measure has a sixteenth-note run, followed by a wavy line. The bass clef staff contains a whole note chord (G2, B2, D3) in the first measure, a whole note chord (G2, B2, D3) in the second measure, and a whole note chord (G2, B2, D3) in the third measure. Dynamic markings include *p* and *mp*.

Handwritten musical notation for the third system. The treble clef staff has a wavy line in the first measure, followed by a half note G4 (marked *pp*), and another half note G4 (marked *pp*). The second measure has a half note G4 (marked *pp*), followed by a half note G4 (marked *pp*). The third measure has a sixteenth-note run. The bass clef staff contains a whole note chord (G2, B2, D3) in the first measure, a whole note chord (G2, B2, D3) in the second measure, and a whole note chord (G2, B2, D3) in the third measure. Dynamic markings include *pp* and *mf*.

Handwritten musical notation for the fourth system. The treble clef staff has a sixteenth-note run in the first measure, followed by a wavy line. The second measure has a wavy line, followed by a wavy line. The third measure has a half note G4 (marked *pp*), followed by a half note G4 (marked *pp*). The bass clef staff contains a whole note chord (G2, B2, D3) in the first measure, a whole note chord (G2, B2, D3) in the second measure, and a whole note chord (G2, B2, D3) in the third measure. Dynamic markings include *mf* and *pp*.

Handwritten musical notation for the fifth system. The treble clef staff has a sixteenth-note run in the first measure, followed by a wavy line. The second measure has a wavy line, followed by a wavy line. The bass clef staff contains a whole note chord (G2, B2, D3) in the first measure, a whole note chord (G2, B2, D3) in the second measure, and a whole note chord (G2, B2, D3) in the third measure. Dynamic markings include *mf* and *pp*.

Handwritten musical notation for the sixth system. The treble clef staff has a wavy line in the first measure, followed by a wavy line. The second measure has a wavy line, followed by a wavy line. The bass clef staff contains a whole note chord (G2, B2, D3) in the first measure, a whole note chord (G2, B2, D3) in the second measure, and a whole note chord (G2, B2, D3) in the third measure. Dynamic markings include *pp*.

*a tempo*

Handwritten musical score for the first system. The treble staff begins with a 7-measure rest, followed by eighth notes, and a triplet ending. The bass staff has a 7-measure rest, followed by chords, and a triplet ending. Dynamics include *rit.*, *mp*, and *mf*. A key signature change to one flat is indicated.

Handwritten musical score for the second system. The treble staff has a 7-measure rest, followed by eighth notes, and a triplet ending. The bass staff has a 7-measure rest, followed by chords, and a triplet ending. Dynamics include *sub p* and *mf*. A key signature change to one sharp is indicated.

Handwritten musical score for the third system. The treble staff has a 7-measure rest, followed by eighth notes, and a triplet ending. The bass staff has a 7-measure rest, followed by chords, and a triplet ending. Dynamics include *mf* and *mp*. A key signature change to one sharp is indicated.

Handwritten musical score for the fourth system. The treble staff has a 7-measure rest, followed by eighth notes, and a triplet ending. The bass staff has a 7-measure rest, followed by chords, and a triplet ending. Dynamics include *cresc.* and *mf*. A key signature change to one sharp is indicated.

*Giocoso* ( $\text{♩} \approx 60$ )

Handwritten musical score for the fifth system. The treble staff has a 7-measure rest, followed by eighth notes, and a triplet ending. The bass staff has a 7-measure rest, followed by chords, and a triplet ending. Dynamics include *f*. A key signature change to one sharp is indicated.

Handwritten musical score for the sixth system. The treble staff has a 7-measure rest, followed by eighth notes, and a triplet ending. The bass staff has a 7-measure rest, followed by chords, and a triplet ending. Dynamics include *mf*. A key signature change to one sharp is indicated.

Handwritten musical score for the first system. The treble staff contains a melodic line with triplets and slurs, marked with a lightning bolt symbol. The bass staff provides harmonic accompaniment with chords and triplets. Dynamic markings include *pp* and *mp*.

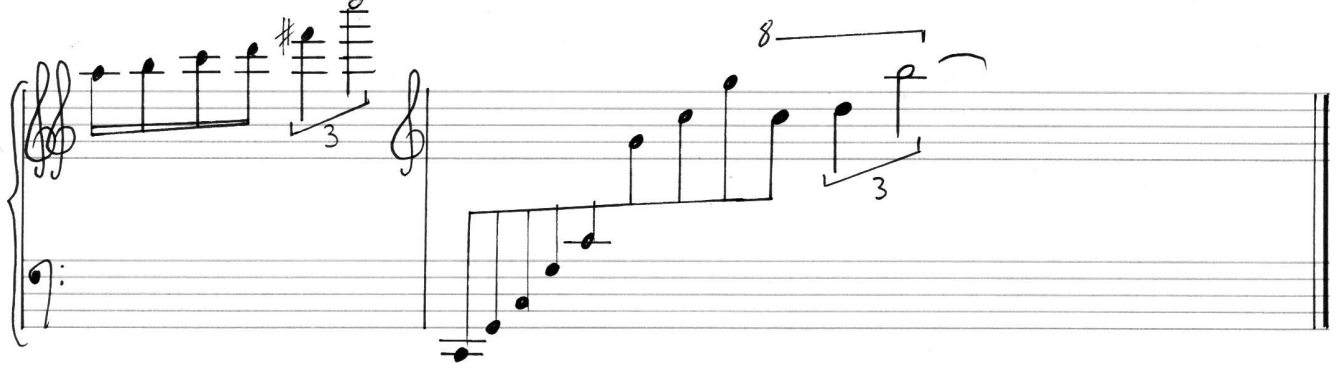
Handwritten musical score for the second system. The treble staff continues the melodic line with triplets and slurs. The bass staff features chords and triplets. Dynamic markings include *pp* and *mp*.

Handwritten musical score for the third system. The treble staff has a melodic line with triplets and slurs. The bass staff has chords and triplets. An instruction *accel. poco a poco* is written above the treble staff. Dynamic markings include *mp*.

Handwritten musical score for the fourth system. The treble staff has a melodic line with triplets and slurs. The bass staff has chords and triplets. A tempo marking  $\text{♩} \approx 90$  is present. Dynamic markings include *f*.

Handwritten musical score for the fifth system. The treble staff has a melodic line with triplets and slurs. The bass staff has chords and triplets. An instruction *rit.* is written above the treble staff. Dynamic markings include *ff* and *mp*. The instruction *lasciare vibrare* is written above the treble staff.

Handwritten musical score for the sixth system. The treble staff has a melodic line with an 8-measure phrase. The bass staff has chords and triplets. Dynamic markings include *mp*.



Vähesed suudavad elada ja liikuda soos - turbamätaste vahel viirvendab  
külm teesi. Soo pakub aga kaitset ja kodu sookurgedele. Tihti nad hoi-  
kavad paaris nü, et mets ümleerringi kajab, ja vahel tantsivad  
ka oma kummalist tantsu.